

CARE AND USE OPERATING INSTRUCTIONS

CONTINUOUS FEED MODELS — 333, 333/SS, 77, 66, CLASSIC & BADGERS

1. Remove the stopper from the disposer sink sleeve and turn on the cold water full flow. (Water should remain on during complete disposer operation.) Failure to turn on a full flow of water before turning on the disposer can cause drain blockages.

2. "Flip" the switch to the on position to start disposer. Feed food waste into the disposer while it is running.

To avoid drain pipe blockage allow water to flow sufficient time after grinding is completed to be sure all waste is flushed away. Ground waste and water mixture flows at the rate of 2 seconds per foot in a horizontal drain line. A minimum of 15 seconds is recommended.

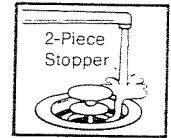
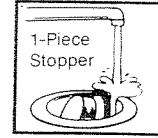
NOTE: After all the food waste has been fed into the disposer place the stopper in the sink sleeve in the drain/grind position (see illustrations) to minimize the possible ejection of material while grinding.

DO NOT INSERT HAND INTO DISPOSER.

BATCH FEED MODELS 17 and CLASSIC/LC

3. If your new disposer is a "Batch-Feed" model, the on/off switch is built in and operated by the stopper. Remove the stopper from the sink sleeve and push the food waste into the disposer chamber. **CAUTION: DO NOT PACK THE CHAMBER WITH WASTE.** Place the stopper back into the sink sleeve in the seal position, turn on the cold water full flow. Failure to turn on a full flow of water before

turning on the disposer can cause drain blockages. Lift up the stopper handle slightly and turn it to the right or left until the disposer starts. To avoid drain pipe blockage allow water to flow sufficient time after grinding is completed to be sure all waste is flushed away. Ground waste and water mixture flows at the rate of 2 seconds per foot in a horizontal drain line. A minimum of 15 seconds is recommended.



Stoppers are in drain/grind position.

DO'S AND DON'TS

DO grind food waste only with a strong flow of cold water.

DO grind hard material such as bones, fruit pits, etc. A scouring action is created by the particles inside of the grind chamber.

DO grind citrus and other melon rinds.

DO dispose of coffee grounds in your disposer regardless of whether or not you are on metropolitan sewer or septic tank. Coffee grounds will not harm the action of the septic tank.

DO dispose of small amounts of fats and greases in your disposer. Be sure to have the disposer operating and use a strong flow of cold water. If you have a large amount of fat and grease, we suggest you place it in a container, allow it to solidify, then dispose of it in the trash.

DO flush disposer for cleaning. Allow disposer and cold water to run after grinding or after draining sink of dish water. Some detergents are caustic; flushing will pass such material into the drain line without disposer damage.

DON'T use hot water when grinding food waste. However, hot water can be drained into the disposer between grinding periods.

DON'T turn off motor or water until grinding is completed and only a motor and water sound is heard.

DON'T become alarmed if a brown discoloration appears on the face of the grinding disc. This is normal. It is a surface discoloration only and will not affect the life or performance of the disposer.

DON'T grind extremely fibrous material like corn husks, artichokes, etc. to avoid possible drain blockage.

Objectionable odors coming from your disposer are usually from bits of food waste left inside the disposer as a result of insufficient water to flush the disposer. To clean, follow instructions below.

Shut off disposer. Lift the rubber splash baffle and use a scouring pad to clean the underside of the baffle. Then, use the scouring pad to clean the inner, upper lip of the disposer body.

Place stopper in sink and fill one half way with lukewarm water. Add baking soda and mix to form a solution. Turn on the disposer, remove stopper from sink, push the rubber splash baffle down slightly to release entrapped air. This will thoroughly flood the inside of the disposer to wash away particles loosened in the cleaning operation. The baking soda will then freshen the inside of the disposer.

INSTRUCTIONS PERTAINING TO A RISK OF FIRE, ELECTRIC SHOCK, OR INJURY TO PERSONS

IMPORTANT SAFETY INSTRUCTIONS

WARNING: When using electric appliances, basic precautions should always be followed, including the following:

1. Read all the instructions before using the appliance.
2. To reduce the risk of injury, close supervision is necessary when an appliance is used near children.
3. Do not put fingers or hands into a waste disposer.
4. Turn the power switch to the off position before attempting to clear a jam or remove an object from the disposer.
5. When attempting to loosen a jam in a waste disposer, use a self service wrenchette as described below.
6. When attempting to remove objects from a waste disposer use long-handled tongs or pliers.
7. To reduce the risk of injury by materials that may be expelled by a garbage disposer place the stopper in the drain/grind position when grinding. Do not put the following into a disposer:

- a. Clam and oyster shells.
 - b. Drain cleaner.
 - c. Glass, china or plastic.
 - d. Large whole bones.
 - e. Metal, such as bottle caps, tin cans, or aluminum foil.
8. When not operating a disposer, leave the drain cover in place to reduce the risk of objects falling into the disposer.
9. a. **GROUNDING INSTRUCTIONS FOR CORD CONNECTED UNITS.** This appliance must be grounded. In the event of a malfunction or breakdown, grounding provides a path of least resistance for electric current to reduce the risk of electric shock. If this appliance is equipped with a cord having an equipment-grounding conductor and a grounding plug, the plug must be plugged into an appropriate outlet that is properly installed

and grounded in accordance with all local codes and ordinances.

DANGER - Improper connection of the equipment-grounding conductor can result in a risk of electric shock. Check with a qualified electrician or serviceman if you are in doubt as to whether the appliance is properly grounded. Do not modify the plug provided with the appliance — if it will not fit the outlet, have a proper outlet installed by a qualified electrician.

- b. **GROUNDING INSTRUCTIONS FOR PERMANENTLY CONNECTED UNITS:** This appliance must be connected to a grounded, metal, permanent wiring system; or an equipment-grounding conductor must be run with the circuit conductors and connected to the equipment-grounding terminal or lead on the appliance.

SAVE THESE INSTRUCTIONS

USER MAINTENANCE INSTRUCTIONS

Trouble Shooting

Loud noises while your disposer is operating are usually caused by the accidental entry of a spoon, bottle cap, or similar object. To correct this, turn off the disposer switch and water. After grinding disc has stopped turning, investigate. Remove object by reaching into the unit with tongs.

Motor stops while your disposer is operating.

This can be caused by overloading the unit. First, check the cause of the overload — often some foreign material is in the disposer. Turn off the disposer switch and water. Remove object as previously explained. To RESTART THE MOTOR: wait 3 to 5 minutes, then push in on the small red reset button located on the bottom of your disposer (figure 4). If motor remains

inoperative, check your fuse box and replace any blown fuses, or look for a tripped circuit breaker.

Note: If water does not drain as readily as you think it should, and food waste tends to float or take too long to grind, don't reduce water flow to solve this problem. It is very likely that the drain line is partially clogged and should be cleaned with a plumber's flexible rod or tape.

Like any precision machine, your disposer was built to perform a particular job. If unusual demands are placed on it, service interruptions are possible. These service interruptions, mentioned below, are usually not serious and in most cases, can be remedied without calling a service man.

To Free Jams From Foreign Objects

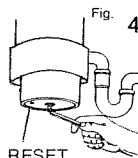
The accidental entry of foreign material will cause any disposer to jam occasionally. To free jammed material, follow these steps:

1. Turn off disposer and shut off cold water.
2. Insert one end of your Self Service Wrenchette provided with your disposer, into the center hole of the bottom of the disposer as shown.
3. Work the Wrenchette back and forth until it moves freely for at least one complete revolution. Remove foreign object with tongs. Remove Wrenchette before restarting disposer.
4. Wait 3 to 5 minutes to allow disposer motor to cool and then push red reset button (see fig. 4)

Your Self Service Wrench will free virtually every jam that may occur, due to foreign objects entering the disposer. Very rarely, however, a piece of metal (bobby pin, thumb tack, paper clip, silverware, etc.) causes a jammed condition too tight for your Wrenchette to handle. To free this type of jam, a pry bar or tool must be used.

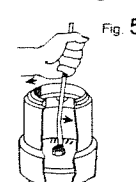
Follow this procedure to save the cost of a service call to free a tight jam:

Be sure wall switch is turned off. Remove as much food waste from the disposer as is possible reaching with tongs. Use a flashlight to determine the direction the unit was running at the time of the jam. A pry bar or tool should be inserted through the sink opening into the



RESET
BUTTON

disposer. The end then must be placed alongside the grinding protrusion near the outside edge of the grinding disc. Be sure to place the pry tool on the proper side of the protrusion so when pressure is applied the grinding disc will move in



the proper direction to unjam the disposer (see figure 5).

Do not drop or hammer on pry bar.

Lose Your Self Service Wrenchette? If you should ever lose your Self Service Wrenchette just write to us and a replacement will be sent at no charge.

WRITE TO: WRENCHETTE
c/o IN-SINK-ERATOR
SERVICE DEPT.
4700 21st Street
Racine, Wisconsin
53406